

# pulsar<sup>®</sup> 3+

## User's manual (Firmware 3P26)



### Device description

**Pulsar 3+** is a fast, professional battery charger with an integrated extra powerful balancer. The charging power of 2.5 kW allows to charge all rechargeable batteries with maximum cell count at the maximum charging current of 40 A. An innovation is the short circuit safe balancer with up to 2 A balancing current per cell at a total balancing power of 100 W. The synchronic digital converter operates with precision and efficiency unmatched by other devices of similar type due to the DSP (Digital Signal Processor) control. Power, work precision and ease of use were the key focus during the device's construction. The newest technology, rarely used in model chargers, guarantees an optimal operation of battery packages. Impulse work in the reflex mode prevents the memory effect and the lazy battery effect in NiXX batteries as well as lessens the threat of unbalancing in LiXX batteries. The real impulse mode "Fastmod" for Lixx and Pb batteries can shorten the charge time even by 30-40%. The integrated high-powered balancer equalizes the packages in a very short time, without unnecessary prolonging the process, thus keeping the singular cells' voltage perfectly equalized. The multiple algorithms operating simultaneously, which detect the level of the cells' voltage, as well as the capacity limiter and an integrated temperature indicator, protect the packages from overloading and damaging. The processes' parameters can be seen on the backlit graphic displayer. The self-explanatory single Rotary knob, as well as twenty integrated memory banks enable frequently used processes to be chosen faster, make for easier operation. An SD memory card enables recording the data from all of the processes, which can then be analyzed via the Pulsar Graph program on a PC or notebook, and helps detect damage earlier. By analyzing diagrams containing the gathered data, it enables tracing the charging packages' ageing. Updated data from the process undertaken are sent to a PC through USB or radio data transmission system (BT or BT/WiFi), which may in the future send data to cell phones. The charger protects batteries from deep discharge as well as overloading by controlling the charging batteries' (12, 24, 36 and 48V) parameters, thus protecting them from damage. A separate AC adapter with a power limiter enables to adapt the work parameters to a particular charger. **Pulsar 3+** is protected from short circuit and reverse connection both at input and output. **Pulsar 3+**, as one of the few modeling chargers, is equipped with a system that prevents electric arcing when high voltage packs are plugged in. The device's firmware update also is possible via the Internet.

## Table of content

Chapter	Page
1. Device description	1
2. Technical specification	3
3. Precautions	3
4. Scope of use	3
5. EU – certificate of conformity	4
6. Features	4
7. Definitions, abbreviations and symbols	4
• Battery types	4
• Modes	4
• Parameters and abbreviations	4
8. Starting and operating	5
• Plugging the balancer	6
• Attentions	6
9. Batteries (attributes)	7
10. Operating principle – general description	7
• Main menu	7
• Program window	8
• Memory window	8
11. „SD, RF, RTC“ settings	8
• Window description	8
• Send last	8
• Personalization through an SD memory card	9
12. Additional information concerning SD memory cards	9
13. Basic setup settings	9
14. Process set-up – charging NiCd and NiMH cells	10
15. Process set-up – charging LiXX and NiZn cells	10
16. Process set-up – charging Pb cells	11
17. Process set-up – discharge (all cell types)	12
18. Double processes set-up e.g. charging/discharging	13
19. Process set-up – Store / Condit (only LiXX)	13
20. Process set-up – Format (only NiCd and NiMH cells)	14
21. Balancer – operating	15
22. Process set-up – balancing only (Monitor)	15
23. Prozess set-up – Test	15
24. Program windows of finished processes	15
25. Process initialization	17
26. Process end, reports and alarms	17
27. Alarms – interrupting the process	18
28. Updating the software	18
29. PC software (PulsarGraph)	18
30. Appendix 1 – Balancer adapter	22
31. Index	23

## Technical specification

Battery types supported	NiCd, NiMH, NiZn, Pb, Li-Ion, LiFe, LiPo, LiHV, LTO, Nalo (SiB)
Input/output device voltage	12V (9**-15,5V); 24V (18-31V); 36 V (27-48 V); 48V (36-60***V) Car battery min. 50Ah – recommended from 90Ah or stabilized 48V power supply from 2500W; Lilo, LiPO, LiFe, LTO battery packs
Automatic shutdown in case of reaching min voltage set in the following ranges:	Min. 9–12 V; Min. 18–24 V; Min. 27–36 V; Min. 36–48 V
Charging voltage*	0,5-64V 1-34 NiCd and NiMH; 1 -30 NiZn; 1-22 Pb; 1-14 Li-Ion; 1-14 LiPo; 1 - 12 LiHV; 1-16 LiFe; 1 – 20 LTO (with balancer up to 16); 1-14 Nalo
Charging current	0,1-40A (max. 2500W)
Max charging power	500 W/12 V; 1.000 W/24 V; 1.600 W/36 V; 2.500 W/48 V
Current set-up resolution (automatic ranges)	0,1-10,0A set in 0,1A intervals 10-40A set in 0,5A intervals
Discharging current	0,1-40A (500/1000/1600/2500W) with energy return 0,1-40A (100W) with heat dissipation (operating on power supply)
Power limiter	100-2640W (input power, on power supply)
Temperature measurement	0-99°C (0,1°C resolution)
Voltage measurement	0,1-65V
Current measurement	0,1-40A
Time limit	24h per process (2x24h for complex processes)
Max balancing power	100W
Max equalized current per cell	0,50A; 1,0A; 2,0A (continuous current)
Min equalized current per cell	50mA; 100mA; 200mA (continuous current)
Number of cells (balancer)	1-16 (depending from cell type)
Balancing precision	up to 3mV (0,003V)
Backlit graphic display	240 x 64 pixels
Temperature ranges	Use: from -5 to +35°C / keeping: from -10 to +50°C
Mechanical dimensions: width x depth x height	155 x 160 x 75mm
Weight	ca. 1085g

\*) Using a power supply above 48 V, on individual cells (charging voltages below 5 V) a reduction of power (protective function of the converter) is possible. \*\*) Input voltage drops below 10.5 V is permitted only if batteries as a power source (not PSU) used. \*\*\*) Input voltage drops over 55 V is permitted only if batteries as a power source (not PSU) used.

## Precautions

- Read manual before use
- Do not perform any changes or modifications to the device
- Always pay attention to the right plug-in polarity
- Protect from humidity and dust
- Operate with a car battery **only** when the car engine is turned off
- Protect from short circuits and reverse polarity during plug-in
- During charging built-in batteries (e.g. in a transmitter) pay attention to the permitted current (e.g. transmitters permit 0,8-1,5A)
- Do not put any objects into the device through the charger's vents
- Do not charge/discharge the batteries via the integrated battery management system (BMS). The charger should also be powered by bypassing the BMS, otherwise the BMS and/or the charger could be damaged. Vents must not be obscured in any way during use
- Do not leave the Pulsar connected to the power supply permanently
- Contact customer service immediately after noticing any irregularities in the device's functioning
- Use the charger only under constant supervision
- The charger and batteries should always be placed on a non-flammable surface while used
- Do not turn on in close proximity with people, who have artificial health-maintaining devices vulnerable to the magnetic field (e.g. artificial cardiac pacemaker)
- When supplying the charger from a car battery, it is possible that the battery will be damaged due to excessive current draw

## Scope of use

**Pulsar 3+** is a charger with an integrated balancer, designed to charge, test and discharge batteries used in all lines of modeling. It may be used to charge lead batteries (car batteries), but the charger is optimised to be used

with lead-gel batteries. Using the charger for other purposes may endanger possessions and health, therefore it is advised to use the device according to its intended purpose.

## EU – Certificate of conformity

**Pulsar 3+** is designed according to the general safety standards – especially home appliance's standards, such as DIN EN 55014-1:2016-09; (Teil 2: Störfestigkeit) DIN EN 55014-2:2016-01.

ELPROG  
ul. Przemysłowa 11  
PL 35-105 Rzeszów



## Features

1. **Pulsar 3+** charger
2. User's manual
3. Connecting cable with alligator clips
4. Adaptor cable for standard charging cable (XT90 to 4mm sockets; please note the allowed max. charging current of 25 A)
5. Balancer adaptor P3+
6. SD memory card (containing PC software, user's manual – PDF file)
7. USB cable
8. Temperature sensor
9. Optional BT antenna (only if the BT or BT/WiFi module is installed)

## Definitions, abbreviations and symbols (in alphabetic order)

### Battery types:

**NiXX** = NiCd (nickel-cadmium), NiMH (nickel-metal hybrid), NiZn (Nickel-Zinc)  
**LiXX** = LiPo (lithium-ion polymer), Li-Ion (lithium-ion), LiFe (LiPh), (lithium-phosphate), LiHV (Lithium High Voltage), LTO (Lithium-Titanate-Oxid); Nalo (Na-Ion Natrium-Ionen);  
**Pb** = lead battery (also lead-jelly)

### Modes:

**Charge** = charging  
**Ch.Dis** = charging and then discharging (a double process)  
**Condit** = charging - discharging (capacity check) - charging to storage voltage  
**Disch.** = discharging  
**Dis.Ch.** = discharging and then charging (a double process)  
**Format** = special formatting and NiXX package regeneration program  
**Store** = special program used to prepare LiXX packages for longer storing  
**Test** = special program for measurement of the internal resistance of battery pack (tested by discharge impulse)

### Parameters and abbreviations:

↑ = voltage change tendency marker; displayed in the menu window above „V” (Volt) during charging and discharging, in the balancer window it marks the cell with the highest voltage.  
↓ = voltage change tendency marker; displayed in the menu window above „V” (Volt) during charging and discharging, in the balancer window it marks the cell with the lowest voltage.  
**Δ (with NiCd and NiMH)** = *Delta-Peak* value; recognizing the charging state of NiCd and NiMH batteries  
**Δ (with LiXX and NiZn)** = cell's voltage difference in LiXX and NiZn packages  
**-, - Ah** = limiter capacity settings  
**!** = the exclamation mark informs of the altered parameter value as compared to the default settings (e.g. an altered final charging voltage value)  
**Ah/c** = equalized capacity per cell (in the balancer window)  
**Auto** = automatic discharge current reduction; the current, after reaching a discharge voltage of the package/cells, will be greatly reduced in order to reach a deeper discharge without exceeding the set voltage limit  
**B:** = current balancer power  
**B** ("B" („B” is displayed alternately with „V”) = additional balancing (in case the battery is still not correctly balanced after end of charging process)  
**Beep** = acoustic signal  
**BT or WiFi** = optional wireless communication  
**C** = {Capacity} charged or discharged capacity

$c = \{Charging\ rate\}$  charging or discharging current according to the battery capacity in Ah: Is displayed by current justage when limiter is active

**Config\_ (0-9) = Config\_ (0-9)** = Writing (and reading) of the current configuration on SD card (incl. memory)

**Contr.** = display's contrast settings

**Cs** =  $\{Capacity\ supply\}$  displays the amount of energy drawn (and recuperated) from the power supply from the moment the charger was plugged in. The Cs value (capacity which has been taken from the current source) can now be reset manually or automatically by date change. The setting can be changed in the "SD, RF, RTC" menu. The Cs value reset can be done by pressing the use button for long time during the start screen.

**E** =  $\{End\}$  displayed alternately with „V” when at the end of the process the current has been reduced

**Fast** = Fastmod – a fast charging mode for LiXX cells

**Format** = special program for formatting NiXX packages

**I** =  $\{Inflex\}$  displayed after recognizing the *Inflex* point at the end of the NiXX packages' charging („I” is displayed alternately with „V”)

**Ib** = max. channel balancing current (0 = only the voltage measure for cells with the balancing disabled)

**Inflex** = a means of early NiXX packages' charging recognition

**Invers** = switches between negative and positive data display on the displayer

**Last proc.** = data from the last process

**Light** = display brightness

**mΩ/c** = Internal resistance (in mΩ) per cell

**M** =  $\{Memory\}$  memory place number

**Monitor** = displaying cell voltages by balancer port (without balancing "only Bal")

**P** =  $\{Pulse\}$  displayed alternately with „V” (Volt) during charging in *Fast* mode; it indicates switching to discontinuous operating mode at the end of the charging

**Pause** = pause between processes indicated in seconds (e.g. during charging/discharging)

**Power** = input power; this setting enables to limit the input power (e.g. in weaker AC adapters or smaller supply batteries)

**Pulse** = an impulse operating mode (should be enabled if the power supply is supplied by a power generator which has a negative reaction with power consumption oscillation)

**P rev** = maximum discharge power with energy recuperation (important for use with bidirectional power supplies)

**R** =  $\{Revers\}$  displayed alternately with „V” (Volt) during charging discharging with an energy return; it indicates the current reduction after exceeding the *V rev* voltage of the supplying battery

**Reflex** = impulse work with a discharging impulse. Suggested for all battery types!

**Regen.** = regeneration function initialized along with the formatting mode of NiXX packages

**Rep.\*99** =  $\{Repeat\}$  the number of double processes' repetition (charging/discharging or format)

**Revers** = discharging with an energy return to the supplying battery (enables to increase the discharge power)

**RF** = radio frequency – Communication by BT or WiFi

**Ri** = internal resistance of the package or cell

**RTC** =  $\{Real-Time\ Clock\}$  real-time clock (required for recording data on the memory card)

**SD** =  $\{Secure\ Digital\ Memory\ Card\}$  – memory card

**Sup.** (supply) = Power supply – the power supply or battery type and cell count can be selected in the setup.

**Tc** =  $\{Temp.\ cell\}$  package temperature measured with the temperature indicator which comes with the charger

**Ti** =  $\{Temp.\ internal\}$  internal temperature of the charger

**Store** = a program created to charge or discharge packages to the storing voltage level (LiXX)

**T off** = max. temperature at which the process is stopped

**T on** = the temperature below which the process will start (in other words – the charger waits for the package to cool down)

**V/c** =  $\{V/cell\}$  voltage of a single cell or package – evaluated for one cell

**Vc** =  $\{Vcharge\}$  final charge voltage (can be modified individually)

**Vd** =  $\{Vdischarge\}$  final discharge voltage (can be modified individually)

**Ve** =  $\{Vend\}$  storage voltage – *Store* (can be modified individually) or Pb charge over-charge voltage

**Voff** = min. supplying battery voltage, at which the process is stopped (prevents deep discharge)

**Vs** =  $\{Vsupply\}$  supply voltage (battery or supply source)

**Vrev** =  $\{Vrevers\}$  max. supplying battery voltage, which – when exceeded – will reduce the charging current with a return (a protection for the supplying battery)

99,! = exceeding the range for temperature (over 99,9°C) and internal resistance (over 99,9 mOhm)

## Starting and operating



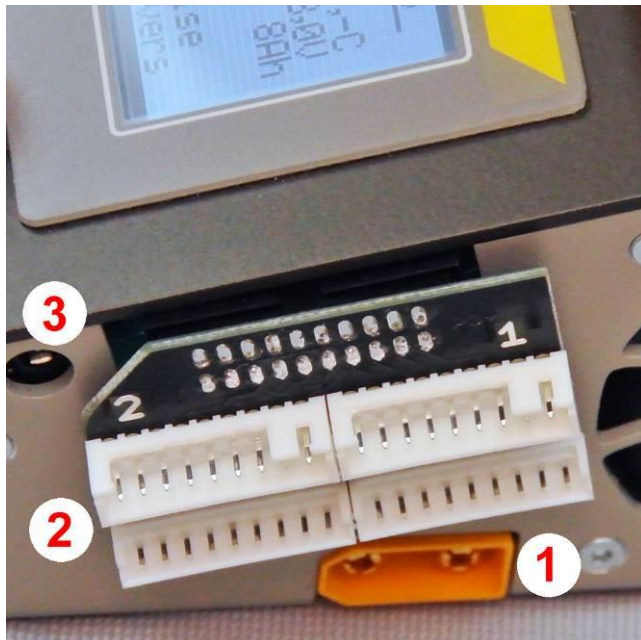
### Front view

1. Rotary knob
2. Balancer connector

**INFO:** Before first use, please remove the protection sticker from the display.

**INFO:** BT antenna only when optional BT or BT/WiFi is installed.





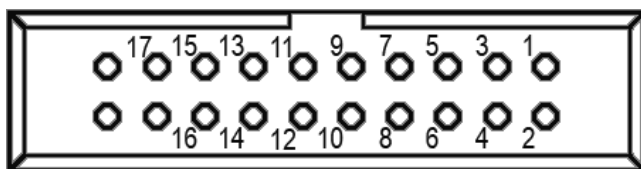
#### Right side

1. Charging connector
2. Balancer adaptor (for up to 2 A balancing current)
3. Temperature sensor

The battery balancer connectors should be connected to the balancer board with the connector strip no. 1 and then with the connector strip no. 2 right-aligned. With the connector strip no. 1 the balancer plug with the minus from the battery should be connected.

**Info:** The balancer adaptor should always be screwed in place with the Pulsar housing!

**Attention! Please take care that no metallic objects touch the balancing contacts! Damage hazard!**



#### Plugging the balancer

**Pulsar 3+** balancer socket – the device's right-side view

**Plugging separate pins:** 1 = - cell 1; 2 = + cell 1; 3 = + cell 2; 4 = + cell 3; 5 = + cell 4; 6 = + cell 5; 7 = + cell 6; 8 = + cell 7; 9 = + cell 8; 10 = + cell 9; 11 = + cell 10; 12 = + cell 11; 13 = + cell 12; 14 = + cell 13; 15 = + cell 14; 16 = + cell 15; 17 = + cell 16; 18 = - cell 9. Additionally, it is possible to plug in a temperature indicator to pins 19 and 20 (NTC 10kΩ).

**Warning:** The balancing adaptor from **Pulsar 3** is not compatible with the balancing input of the **Pulsar 3+**!

**Attention! Please do not connect batteries directly as long as these are not equipped with a special balancing connector for Pulsar 3+! Important! The pin no. 20 contains the plus pole for the temperature sensor!**



#### Left side

1. Rotary knob
6. USB socket
7. SD memory card
8. BT or BT/WiFi antenna (optional)

**Important:** Dismount antenna for transport!

#### Attention!

- The **Pulsar 3+** has enormous power. Please take care to use suited cables beyond 1.500 W. These should be short and connected with the XT90 connector directly to the **Pulsar 3+** without any additional extensions or adaptors from the battery. Other suited charging cables should have at least 4-6 mm<sup>2</sup> silicone wire as well as connectors which are suited for min. 40 A continuous current.
- The balancing current from up to 2 A is more than most standard balancing cables and connectors of battery packs can take. Before using the max. balancing current, please make sure if the balancing cables, connectors, extensions or adaptors are suited for such high current! The balancing cables should be as short as possible and if possible, without additional connectors, balancing extensions are not allowed. The provided balancing adaptor is suited for a balancing current of 2 A. **Attention:** Ribbon cables from PC accessories with crimped contacts are not suitable for 2 A balancing!

- As a safety measure temperature control through a plugged in temperature indicator is always advised.
- After plugging the pack into the charger, it is necessary to ALWAYS control and confirm the indicated number of cells. Confirming an invalid number of cells in the package may result in damaging the package and cause other material damage.
- Always pay attention to the proper charging and discharging current choice. The charge must be selected accordingly to the type, kind and size of the cells.
- Charging cables with appropriate connections and pins as well as wire section fitted to the charge should be used. Using high-current cables with silicon isolation with a 6 mm<sup>2</sup> diameter is recommended. Charging cables should be short.
- **Pulsar 3+** is equipped in a system, which prevents arcing when the cables are being plugged in for charging. However, it is recommended that cables should be plugged in and out rapidly and firmly.
- In order to avoid arcing, plugging and unplugging by a battery-lead connection to the power supply or AC adapter should be done rapidly and firmly.
- After unplugging the charger from the power supply, it shouldn't be reconnected earlier than 5 seconds.
- The process can be interrupted through holding down the rotary knob (**interrupting the process through unplugging the device is forbidden**).

## Batteries (parameters)

Type	LiPo	LiHV	Lilon	LiFe	LTO	NaIo	NiCd	NiMH	NiZn	Pb
Name	lithium-ion polymer	lithium-high volt	lithium - ion	lithium - iron	lithium-titanate	Natrium - lonen	nickel-cadmium	nickel-metal hybrid	nickel-zinc	lead
Rated voltage	3,70V	3,85 V	3,60V	3,30V	2,30V	3,05 V	1,20V	1,20V	1,60 V	2,00V
Charging voltage*	4,20V	4,36 V	4,10V	3,65V	2,80V	4,00 V	–	–	1,90 V	2,45V
Discharging voltage*	3,30V	3,30 V	3,00V	2,80V	1,50V	2,00 V	0.85V	1,00V	1,30 V	1,80V
Storing voltage*	3,80V	3,90 V*	3,75V	3,35V	2,35V	3,20 V	–	–	–	–
Balancing voltage start	3,95V	4,10 V	3,85V	3,48V	2,55V	3,75 V	–	–	–	–
Max. charging voltage	4,35V	4,47 V	4,30V	3,75V	2,90V*	4,15* V	1,85V	1,85V	1,98 V	2,80V

\*- the voltage can be lowered by 200mV or increased by 100mV every 10mV max. Any change in charging/discharging voltage will result in a change in max. charging/ min. discharging voltage of the same value.

## Operating principle – general description - Main menu (shown in positive and negative)



**Window description:** From top: clock; software version (here v3P24); power (640/500 W – depending on voltage), on the right switched to battery, the powersupply has 12 V, thus the power output is limited to 500 W, personalization (pp-rc Modellbau Piechowski) shows the max. amount of characters; WiFi on (radio communication activated); SD 33 % (the memory card is 33 % full); TC current temperature (0,0 °C – temperature indicator not plugged in); Vs power supply voltage (12,1 V); Cs (0 Ah) taken capacity (e.g. car battery); Pulse – impulse mode activated; Revers – energy return during discharge deactivated.

**Pulsar 3+** is operated using a Rotary knob. The dial can be turned left and right, pressed for a short (up to 1 second) or held for a long (more than 1 second) time. Both pressing and holding is confirmed by an appropriate acoustic signal (if the sound has not been muted in the setup). Options are chosen from the list by turning the dial to the one that interests us (blinking line), and then choosing it by pressing the dial. The value of the chosen option is set in the same way.

After plugging in to the power supply, **Pulsar 3+** will display the main menu. The operation mode can be changed (setup, one with the battery symbol, the other with a power supply symbol), after which we are redirected to the last used memory window.

The memory window is a starting point to all process' settings and parameters. Memory windows are numbered from 1 to 20 (on the left side there is a frame with an „M” as well as numbers from 1 to 20). Settings made in there remain memorized even after the charger has been turned off.

Through holding the dial for a long time, we enter the program window. There we have the following options:

**Attention!** First connect the **Pulsar 3+** to a power source before connecting the battery pack. If the **Pulsar 3+** should be shut down, first disconnect the battery pack before disconnecting the power source! Never leave a battery pack connected while the charger is offline!

**Attention!** If connecting LiXx battery packs without balancer, double confirm of the cell count is necessary for security reasons!

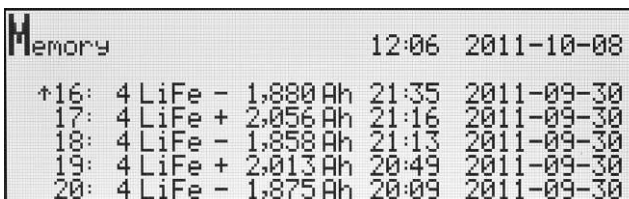
## Program window



### Window description

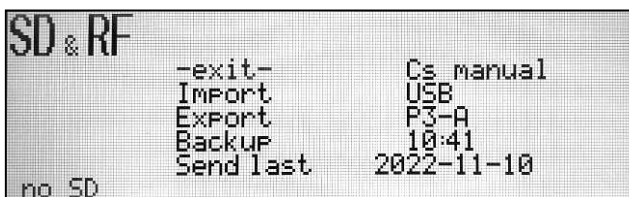
- **-exit-** – return to memory window
- **Mode & Accu** – programming the charger's mode and the type of charger and battery type for the memory cell
- **Parameters** – process parameter settings for the memory cell
- **Memorys** – data collected from the last twenty processes
- **SD, RF, RTC** – SD memory card options, BT or BT/WiFi parameter and clock settings
- **Setup** – defining basic settings important for all processes

After about 10 seconds of inaction (from the last rotations of the dial) the windows will close automatically and the charger returns to the memory window (you can also return to it by choosing “-exit-”). Further detailed setting descriptions may be found in descriptions of specific processes.



**Memorys window description.** Horizontally:  
 “16” – number of the process (1 - last); “4LiFe” – number and type of cells; “-1,880Ah” discharge capacity (‘+’ stands for charging); “21:35 2011-09-30” – time and date of process ending.  
 Top-right “12:06 2011-10-08” current time and date.

## „SD, RF, RTC“ settings



### Window description

- **-exit-** – return to memory window
- **Import** – rewriting the settings from the SD card to the charger (enables using personal settings for other chargers): SD->P3+
- **Export** – memorizing charger settings on the memory card: This way you can use your own
- **Backup** – Archiving the recorded files in the DATA directory: there are now up in the data directory recorded files (up to 512) into a backup directory “BACKUP (1 -3)” moved. Thereafter, the new records in the DATA directory (on SD card) again numbered starting with 001. Up to three backup directories are managed on the memory card. The fourth backup is the oldest of the backup catalog (after a confirmation) will be overwritten with new data. When reaching 99 % of capacity, the SD card will automatically remind about a necessary backup. This does not indicate a full SD card, but an amount of data in the work directory that cannot be managed by the Pulsar anymore.
- **Send last** = one of the last five process data stored on the SD card can be exported directly to the Pulsar Graph software via the USB/BT interface.
- **Cs\_manual/timer** = here it is possible to switch between automatic (by date change) and manual reset of Cs count (in the start screen)
- **WiFi/BT** (on/off) = here the optional wireless communication can be switched on or off. If the BT or BT/WiFi module is not installed, the line will indicate „no RF”. Attention! As long as no USB cable is attached to the Pulsar 3+, the BT or BT/WiFi communication is automatically turned off and “USB” is displayed in the start screen.
- **RTC** (on/off) – turning on/off wireless BT or BT/WiFi transmission. If the BT or BT/WiFi module is not plugged In a „no RTC” sign is displayed – the function is not active.
- **P3 xx...x** – naming a specific BT or BT/WiFi device. Initially it is named „P3-”, after which 6 digits can be assigned. If the name is to be shorter than 6 digits, insert dashes in the free spaces (up to 6 characters). These symbols will not be considered a part of the name
- **16:44** – clock settings
- **2019-02-06** – date settings

Before plugging the power supply to **Pulsar 3**, it is important to make sure if the memory card and the BT antenna (optional) are in the charger. After pressing the dial on the “SD, BT, RTC” line in the program window (we go to



the program window by holding the dial from any memory window) we are redirected to the „SD, BT, RTC” settings.

Setting the BT or BT/WiFi name is important as it will let us recognize our device easier among other devices in close proximity. Setting the date and time are vital for recording data on the memory card. File identification is easier thanks to this.

**WARNING:** as long as **Pulsar 3+** is connected through an USB cable wireless transmission is disabled.

The window will be exited by pressing **-exit-** or automatically after 10 seconds from the last dial movement.

### Personalizing through an SD memory card

In the folder located on the card: *PULSAR3/Setup* there is a file named *title.txt*. The text written there is displayed in the main menu under the **Pulsar 3+** logo right after the chargers startup. A simple text editing program (e.g. Notepad) may be used to edit his text. The text may not surpass 26 characters from the English alphabet ( { ` } inserts a narrow space). If the file isn't to be found on the memory card, the sign „**Pulse charger**” will be displayed.

### Additional information concerning the SD memory card

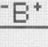
Cards formatted in a PC (FAT16 to 2GB or FAT32 with a 8 GB capacity) should be specifically used in **Pulsar 3+**. After turning on the charger with an empty SD card (without a folder structure) – necessary folders will be created automatically: (PULSAR3 as well as BACKUP, DATA and SETUP). Such a card is ready to be used immediately. The card should be inserted and removed only when the charger is not plugged into a power supply!

## Basic setup settings

**Pulsar 3+** has two equivalent device memory settings – *Setup*. One of them is marked with a battery symbol and the other with a power supply symbol. As both of them are identical they can be used freely. When for example we operate the charger only with a power supply (or only with a battery) they can be both used with different setup memory settings (depending on the need) with the same type of supply.

Through pressing the dial for on the “*Setup*” line we enter the settings from the program window (we enter the program window by holding the dial from any memory window)

**Setup windows** (shown in positive and negative)

Setup 	Battery	Setup	Power supply
-exit-	Power : 2640W / Invers	-exit-	Power : 2640W Invers
Beep	V off : 11.6V Contr.: 10	Beep	V off : 10.0V Contr.: 4
/Pulse	V rev : 14.6V Light : 12	/Pulse	V rev : 13.4V Light : 8
Revers	T on : 35C Pause : 15s	Revers	T on : 35C Pause : 60s
SUP. LiFe 4	T off : 55C	SUP. Auto	T off : 44C

### Window description

- **-exit-** – return to memory window.
- **Beep** – enable/disable acoustic signaling.
- **Pulse** – enable/disable impulse work.
- **Revers** – enable/disable discharging with an energy return do the supplying battery (*Revers*, must be turned off when operating with a power supply, or it may result in damaging the supply) if it is not marked, operating with an energy return is blocked for all memories (in a memory where the energy return was enabled, a ‘-’ symbol is displayed before *Revers*)
- Sup. (Auto; Lilo; LiPo; LiFe; Nalo; LTO) (cell count) = it is possible to choose between power supply and battery type as power source. “Auto” – The voltage check decides about the operating power range of the Pulsar charger. The setting is only well working for power supply devices with 12, 24, 36 and 48 V (nominal), or for lead batteries. If the Pulsar should be supplied from a battery pack, the type and cell count can be selected here.
- **Power/Prev** – setting the power input: 100-2640W, in 10W intervals. This can protect weaker power sources and batteries from overcharging.
- **V off** – min. supply battery voltage below which the process will be stopped (saves from deep discharge of the supply battery). The voltage setup can be done individually.
- **V rev** – max. battery voltage settings, after exceeding which the charge reduction will commence (*Revers* – enabled), this protects the supplying battery from overloading during the energy return, especially when a LiXX batteries are used..
- **T on** – setting the temperature from which the process is enabled: 25-55°C (‘-C’ disabling the function).
- **T off** – setting the temperature from which the process is stopped: 38-60°C (‘-C’ disabling the function, the temperature set in *T off* must be at least 5°C higher than *T on*).

- **Invers** – switch the display from negative to positive.
- **Contr.** – display contrast: 0-15.
- **Light** – display backlight intensity: 0-15.
- **Pause** – pause time between processes (e.g. charging/discharging in cycles): 15-900s in 15s intervals.

## Process set-up – charging NiCd and NiMH cells



**Window description:** From top left: charging is set; in memory window M 18; type of battery NiMh; charging current 0,5A; “=,Ah” – the limiter is disabled; Inflex is disabled; reflex is enabled; Δ 4,0mV (standard value)

All process settings are conducted in a very similar way. First, choose the appropriate memory window that is to be programmed (from **M 1** to **M 20**). Secondly, enter the program window by holding the dial, where the “**Mode & Accu**” option is selected. Here the battery type and the type of the process that is to be programmed is set. For lithium NiXX batteries the following programs have been prepared: **Disch.** (discharge), **Charge** (charge), **Dis.Ch.** (discharge/charge), **Ch.Dis.** (charge/discharge), **Format** (format).

The process parameters can be changed if necessary. Through holding the dial we enter the program window where we chose the “**Parameters**” option, which enables us to set all the parameters important for the process according to our requirements.

And so, for NiCd and NiMH:

- **-exit-** – return to memory window.
- **Inflex** – enables ending the process earlier. Inflex should be used only with charges higher than 1C and accupacks with more than 4 cells. Enabling the Inflex mode is signaled (while the process is in progress) by an „I” symbol under the battery animation.
- **Reflex** – enables charging and supercharging NiCd and NiMh batteries without the threat of the „Memory effect” occurring. In this charging mode short discharging impulses are emitted. Packages charged with reflex often have a lower resistance.
- **Δ** – „Delta-Peak” setting, if the set value diverges from the suggested one, an exclamation mark is displayed (! Δ). With NiCd the value May be set from 4 to 25mV and 1-15mV with NiMH.

Exiting the settings menu can be made by choosing -exit- or automatically after 10 seconds from the last dial movement.

**Warning!** Checking *Inflex* and *Delta-Peak* starts after 2 minutes with NiCd and after 4 minutes with NiMH. Caution is advised when full packages are to be plugged (supercharging them with higher charges), to avoid overloading the packages.

## Setting the charging current

After a press of the dial the required current can be set in the memory window, and after confirming (press of the dial) the limiters' value. The current's value can be between 0,1 A to 40 A set in the following intervals: 0,1A intervals up to 10,0A, 0,5A above 10A. The limiter's capacity is set from “**-,Ah**” (the capacity is not controlled) to 200Ah. Using the limiter is advised, especially with new packages which have not yet been formatted. The limiters value should be set a bit higher then the cells capacity (by about 5-10%), which will prevent unnecessary package overload when the proper evaluation of *Inflex* and *Delta-Peak* is impossible, as a result of unequally charged cells.

After all settings meet our requirements, we can plug in the battery packages to the charger. **Before beginning the process, it is necessary to check if the number of cells in the package matches that indicated by the charger.** After adjusting the number of cells, if necessary, we can start the process by pressing the Rotary knob.

It is important to stress that the procedure described above shows how to set all of the parameters and in practice, to start the process, it May be limited to a few steps. Proper memory setting and creating ready programs to all battery packages is recommended as it will make operating the charger easier and faster.

## Process set-up – charging LiXX and NiZn cells

All process settings are conducted in a very similar way. First, choose the appropriate memory window that is to be programmed (from **M 1** to **M 20**). Secondly, enter the program window by holding the dial, where the “**Mode & Accu**” option is selected. Here the battery type and the type of the process that is to be programmed is set. For lithium NiXX batteries the following programs have been prepared: **Disch.** (discharge), **Charge** (charge), **Dis.Ch.**

(discharge/charge), **Ch.Dis.** (charge/discharge), **Store** (charging or discharging packages to a storing voltage level).

The process parameters can be changed if necessary. Through holding the dial, we enter the program window where we chose the **"Parameters"** option, which enables us to set all the parameters important for the process according to our requirements.

And so, for Lixx:

- **-exit-** – return to memory window.
- **Ib:x,xx** (only LiXX)– setting the max. balancing current: **Ib: 0,00** – no balancing (the voltage of singular cells will be displayed in the balancer windows); **Ib: 0,5** – balancing with a max. current of 0,5 A/cell, (for small capacity packages of 500mAh); **Ib: 1,0** – balancing with a current of 1A/cell (for packages of 500-3000mAh); **Ib: 2,0** – balancing with a current of 2A/cell (use with all LiFe cells as well as other LiXX cells up to 2000mAh). The general rule is that the shorter the charging time (charging with higher currents) and the higher the package's capacity the higher the balancing current should be.  
**Attention:** The balancing current from up to 2 A is more than most standard balancing cables and connectors of battery packs can take. Before using the max. balancing current, please make sure if the balancing cables, connectors, extensions or adaptors are suited for such high current! The shorter the charging time (charging with high C rate - the charging or discharging current related to the capacity of the battery in Ah. Example: A battery with 0.5 Ah capacity has a 1C charging current of 0.5 A), the stronger debalanced the battery pack will be; the bigger the capacity of a battery pack, the higher the balancing current should be.
- **Fast – Fastmod** – a type of fast, impulse charging of Lixx and Pb batteries. *Fastmod*, thanks to a special charging algorithm, greatly accelerates the charging process. After using Fastmod, batteries have a lower inner resistance, and due to this a better voltage flow during discharging. Depending on the charging current, the battery's type, its usage and inner resistance, the charging time may be reduced by even 30% with only a slightly lower capacity. *Fastmod* can be used constantly without any negative side effects for the battery. To make this mode easier to recognize during its use, an animation on the charging battery symbol is three times faster then during normal charging and the letter "F" is displayed under the animation.,
- **Reflex** – *Reflex* mode is also very good for charging LiXX cells. Batteries charged in this way are less likely to unbalance. Short discharge impulses slow the charging process in a slight way.
- **Vc** – setting the final charging voltage. If the value differs from the recommended one, an exclamation mark will be displayed (! **Vc**). For LiPo this value would be 4,00-4,30V/cell; for LiHV 4,05-4,45 V/cell, for Lilo: 3,90-4,20V/cell; for LiFe: 3,45-3,75V/cell; Nalo 3,70-4,30 V/cell; LTO 2,50-2,90V/cell; NiZn 1,80-2,00 V/cell. It is important to mention, that contrary to popular believe 4,20V/cell is not the final safe voltage limit for LiPo cells but only a compromise between current delivery ability and life expectancy. Lower final charging voltage (below the mentioned 4,20V) enhances the battery's life expectancy but the charge capacity is lower. We advise using standard settings.

### Setting the charging current

After a press of the dial the required current can be set in the memory window, and after confirming (press of the dial) the limiters' value. The current's value can be between 0,1A to 40 A set in the following intervals: 0,1A intervals up to 10,0A, 0,5A above 10A. The limiter's capacity is set from **"-,Ah"** (the capacity is not controlled) to 200Ah. Setting the limiter with LiXX batteries is crucial only in special cases. The loading process is finished when the final charging voltage is reached (1/10 of the set charging current or reaching 100mA – the lowest charging current possible), or when the *Fastmod* charge's end detection notifies so (if Fast has been enabled). After all settings meet our requirements, we can plug in the battery packages to the charger.

### Process set-up – charging Pb cells

Settings for lead batteries are very similar as to the LiXX batteries, and because of that only the differences will be described below.

Setting the balancer is not an option as far as lead batteries are concerned. Fast and Reflex modes have similar advantages as in the case of LiXX batteries. The charging end voltage **"Vc"** can be adjusted in the range of 2,25-2,55 V per cell. When the voltage Vc differs from the pre-setting, an exclamation mark (! Vc) will be displayed. For some lead battery typest the voltage Vc should be adjusted according to the recommendations of the battery manufacturer. Examaples can be found in the table. The voltage settings should be applied at a battery temperature of 25°C. For lower temperatures the voltage should be corrected +5 mV/°C or -5 mV/°C if higher.

Type	Pb	Sb/Sb	Ca/Ca	Sb/Ca	GEL	AGM
Voltage	Standard	Lead antimon	Calcium	Antimon+/Ca-	Lead gel	AGM batterie
Vc	2,45 V	2,41 – 2,47 V	2,46 V	2,40 - 2,43 V	<b>2,35 V</b>	2,38 -2,48 V
Ve *	-	2,58 V	2,63 V	2,63 - 2,73 V	-	2,60V

\*) Ve – Voltage of charging with low current, if „-,-,-,“ – function is deactivated.

The charging will be stopped, when the final charging voltage reaches 1/5 or 1/10 of the set current or when the minimum current (100 mA) is reached. Charging with active Fastmod will be finished after automatic process end detection.

## Process set-up – discharging (all cell types)



**Window description.** From top left: set to discharge; in memory window M 1; LiFe battery type; discharge current 25A; “-,- Ah” – the limiter is disabled; balance current 1A (Ib:1,00); Revers (energy return) is enabled in the memory but, as the dash indicate, it is generally disabled in the setup window; final discharge voltage Vd (2,80V);

From top right – information window: TC current temperature; supply voltage Vs: (48,4V); amount of consumed energy Cs: (0Ah); last process information – 2 LiPo cells; charged by 0,063Ah

All process settings are conducted in a very similar way. First, choose the appropriate memory window that is to be programmed (from **M 1** to **M 20**). Secondly, enter the program window by holding the dial, where the “**Mode & Accu**” option is selected. Here the battery type and then **Disch.** (discharge).

The process parameters can be changed if necessary. Through holding the dial, we enter the program window where we chose the “**Parameters**” option, which enables us to set all the parameters important for the process for a particular battery type.

And so:

- **-exit-** – return to memory window.
- **Ib:x,xx** (only for LiXX) – setting the max. balancing current: Ib: 0,00 – no balancing (the voltage of singular cells will be displayed in the balancer windows); Ib: 0,5 – balancing with a max. current of 0,5A/cell, (for small capacity packages of 500mAh); Ib: 1,0 – balancing with a current of 1,0A/cell (for packages of 500-3000mAh); Ib: 2,0 – balancing with a current of 2A/cell (use with all LiFe cells as well as other LiXX cells up to 2000mAh). While discharging, the balancer has the same voltage limits as when charging. **Attention:** The balancing current from up to 2 A is more than most standard balancing cables and connectors of battery packs can take. Before using the max. balancing current, please make sure if the balancing cables, connectors, extensions or adaptors are suited for such high current! The shorter the charging time (charging with high C rate - the charging or discharging current related to the capacity of the battery in Ah. Example: A battery with 0.5 Ah capacity has a 1C charging current of 0.5 A), the stronger debalanced the battery pack will be; the bigger the capacity of a battery pack, the higher the balancing current should be.
- **Auto** – when this parameter is enabled, the current will be reduced after reaching the final discharge voltage by 1/5 of the currently set current. The process will be stopped when the reduced current reaches the value lower than 1/10 of the set current or then 100mA (the lowest possible current). Example: the discharge current is 15A. After reaching the current's final discharge voltage by 1/5 it will give us 12A. After another current reduction by 1/5 it will be 8A, 6,4A ...1,5A. When the “Auto” parameter is disabled, the discharge will be stopped immediately when the final discharge voltage will be reached (without the current reduction – which is 15A in the example given).
- **Revers** – a return of energy to the supplying battery (car battery) helps reaching a higher discharge power. When setup (as the “higher power”) blocks this function, but it will be enabled the memory window a dash will be displayed before the “Revers” sign (**-Revers**). When this function will be enabled in the setup, the dash will disappear from all memory Windows, in which Revers is present, and the function will be enabled (the dash will be replaced by a „✓“). To easily recognize if the energy return is in progress during the process, a discharge animation will be displayed three times faster than during discharge without the energy return. There will also be an “R” letter underneath the animation, and if that “R” is displayed alternately with “V” (Volt) – the current reduction Has occurred after exceeding the supply batteries’ voltage (Vrev – setup). **WARNING:** Activating the reverse function during operation on an unsuitable (not bidirectional) power supply unit can lead to defects!
- **Vd** – final discharge voltage settings. If the set value is other than the recommended settings, an exclamation mark will be displayed (! **Vd**). For cell types: **LiPo** 2,80-3,60 V/cell; **LiHV** 2,8-3,60 V/cell; **Li-Ion** 2,50-3,30 V/cell; **LiFe** 2,00-3,10 V/cell; **Nalo** 1,50-2,50 V/Zelle; **LTO** 1,20-2,00 V/cell, **NiZn** 1,00-1,40 V/cell; **NiMH** 0,80-1,10V/cell; **NiCd** 0,60-0,95V/cell; **Pb** 1,60-1,90V/cell. We advise using standard settings.

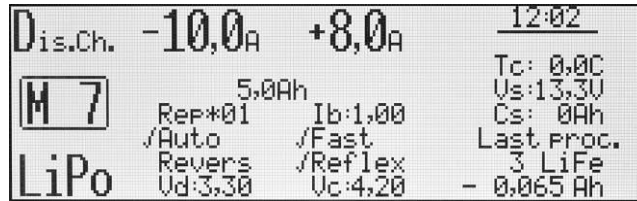
## Setting discharge current

After a press of the dial the required current can be set in the memory window, and after confirming (press of the dial) the limiters’ value. The current’s value can be between 0,1A to 0,25A set in the following intervals: 0,1A intervals up to 10,0A, 0,5A above 10A. The limiter’s capacity is set from “-,-Ah” (the capacity is not controlled) to 200Ah. Setting the limiter with LiXX batteries is crucial only in a particular case.

After all settings meet our requirements, we can plug in the battery packages to the charger. Before beginning the process, it is necessary to check if the number of cells in the package matches that indicated by the charger. After adjusting the number of cells, if necessary, we can start the process by pressing the Rotary knob.

**Warning:** all packages with a balancing connection must always be plugged in the following order – first the balancer, then the charging cable. Thanks to this the charger will always recognize the right number of cells in the package! It is important to check if the number of cells in the package has been properly recognized before starting the process. After adjusting the number of cells, if necessary, we can start the process by pressing the Rotary knob.

## Double processes set-up e.g. charging/discharging



**Window description.** Charging/discharging is set; in memory window M 7; LiPo battery type; discharge current 10A; charge current 8A; 5Ah limiter.

In the column under the discharged current – discharge parameters (REP\*01 – one cycle); under the charge current – charge parameters

Setting double processes (also cycles) is conducted in an identical way as the charge and discharge processes separately. Additionally, we can set the following parameters:

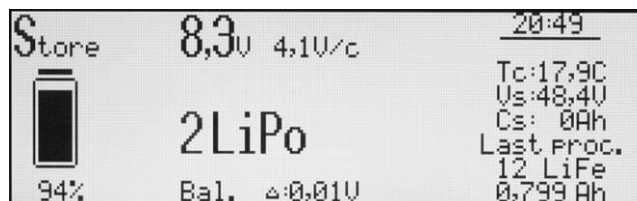
- **Rep\*01** – number of cycles from 1 to 99

Please bear in mind that the “**Pause**” value set in the setup concerns only the pause time between the processes (e.g. charging – pause – discharging – pause - ...).

## Setting the currents in double processes

For example, for **Dis.Ch.** (discharging/charging) – after a press of the Rotary knob in the memory window, we set the desired discharge current and, after confirming it (press of the dial), we set the charge current and after confirming it we may set the limiter value. We proceed in a similar way with **Ch.Dis.** (charging/discharging).

## Process set-up – Store / Condit (storing LiXX cells)



**Window description.** From top left – “Store” process window after plugging in the package; the battery is charged in about 94%, has an 8,3V voltage (4,1V/cell). 2s-LiPo package, the difference between singular cells is 0,01V.

From top right – information window: TC current temperature; charging voltage Vs: (48,4V); energy consumed Cs: (0Ah); last process information – 12 LiFe cells; charged by 0,779Ah

The “Store” function (storing) leads to cell voltage in the package, till it reaches the storing level (see **Batteries** table (parameters)), through discharging and charging. A package prepared by such a function may be stored for a longer time. **Pulsar 3+** automatically recognizes if the package has to be charged or discharged and after plugging the package, it starts the process required to do this.

**Warning:** all packages with a balancing connection must always be plugged in the following order – first the balancer, then the charging cable. Thanks to this the charger will always recognize the right number of cells in the package! It is important to check if the number of cells in the package has been properly recognized before starting the process. After adjusting the number of cells, if necessary, we can start the process by pressing the Rotary knob.

First, choose the appropriate memory window that is to be programmed (from **M 1** to **M 20**). Secondly, enter the program window by holding the dial, where the “**Mode & Accu**” option is selected. Here the battery type is chosen and then **Store**. (storing),

The process parameters can be changed if necessary. Through holding the dial we enter the program window where we chose the “**Parameters**” option, which enables us to set all the parameters important for the process for a particular battery type.

And so:

- **-exit-** – return to memory window
- **Ib:x,xx** (only for LiXX) – setting the max. balancing current: Ib: 0,00 – no balancing (the voltage of singular cells will be displayed in the balancer windows); Ib: 0,5 – balancing with a max. current of 0,5A/cell, (for small capacity packages of 500mAh); Ib: 1,0 – balancing with a current of 1,0A/cell (for packages of 500-

3000mAh); Ib: 2,0 – balancing with a current of 2A/cell (use with all LiFe cells as well as other LiXX cells up to 2000mAh). While discharging, the balancer has the same voltage limits as when charging. **Attention:** The balancing current from up to 2 A is more than most standard balancing cables and connectors of battery packs can take. Before using the max. balancing current, please make sure if the balancing cables, connectors, extensions or adaptors are suited for such high current! The shorter the charging time (charging with high C rate - the charging or discharging current related to the capacity of the battery in Ah. Example: A battery with 0.5 Ah capacity has a 1C charging current of 0.5 A), the stronger debalanced the battery pack will be; the bigger the capacity of a battery pack, the higher the balancing current should be.

- **Revers** – a return of energy to the supplying battery (car battery) helps reaching a higher discharge power. When setup (as the “higher power”) blocks this function, but it will be enabled the memory window a dash will be displayed before the “Revers” sign (-**Revers**). When this function will be enabled In the setup, the dash will disappear from all memory Windows, in which Revers is present, and the function will be enabled (the dash will be replaced by a „✓“). To easily recognize if the energy return is in progress during the process, a discharge animation will be displayed three times faster than during discharge without the energy return. **WARNING:** enabling the energy return when the charger is supplied by an AC adapter may lead to damage to the adapter!
- **Fast** = Fastmod – fast charging and discharging function (Fast is included at charging in the store program only) for LiXX and Pb batteries. Fastmod accelerates the charging or discharging process by a special charging method.
- **Ve** – storage voltage setting. If the set value is other than the recommended settings, an exclamation Mark will be displayed (! **Ve**). It can be set for: **LiPo** 3,60-3,90V/cell; **LIHV** 3,70-4,00 V/cell; **Li-Ion** 3,55-3,85V/cell; **LiFe** 3,15-3,45V/cell; **Nalo** 3,00-3,30 V/celle; **LTO** 1,40-2,00V/cell.

**Condit** = is a triple process which makes it easier to check the capacity of a battery pack before storage. Three processes will start automatically: charge > discharge (capacity check) > charge to storage voltage.

The process will be stopped when the reduced current's value will reach below 1/10 of the set current or below 100mA (the lowest possible current).

## Process set-up - Format (formatting NiCd and NiMH cells)



**Window description.** From top left: formatting is set; in memory window M 17; NiMH battery type; 2,4A charge and discharge current; 2,6Ah limiter; 4 cycles (Rep\*04); regeneration enabled; final discharge voltage Vd (1,00V); Δ 4,0mV (standard value)

Formatting NiXX battery packages is conducted through programming the number of charge/discharge cycles. The discharge is conducted in this program if the “Auto” parameter is enabled. Formatting NiXX cells is particularly important with new, not yet used packages, whose cells are not yet equalized.

General formatting is conducted with low currents of an estimate value of 1/10 C. „C” represents the charge or discharge current which is dependent on the battery capacity (in ampere-hour). And so, a battery with 500mAh capacity a 1C current is equal to 0,5A.

First, choose the appropriate memory window that is to be programmed (from **M 1** to **M 20**). Secondly, enter the program window by holding the dial, where the “**Mode & Accu**” option is selected. Here the battery type is set to NiCd or NiMH and then **Format**. (formatting),

The process parameters can be changed if necessary. Through holding the dial we enter the program window where we chose the “**Parameters**” option, which enables us to set all the parameters important for the process for a particular battery type.

And so:

- **-exit-** – return to memory window.
- **Rep\*01** – number of formatting cycles from 1 to 99. Please bear in mind that the “**Pause**” value set in the setup concerns only the pause time between the processes (e.g. charging – pause – discharging – pause - ...). During formatting a new package, at least 3-4 cycles are recommended.
- **Regen.** – a special means of regenerating cells In the used packages, which have lost some of its capacity and have a heightened internal resistance. During formatting with regeneration, at least 2-3 cycles are recommended.
- **Vd** – final discharge voltage settings. If the set value is other than the recommended settings, an exclamation mark will be displayed (! **Vd**). For cell types: **NiCd** 0,60-0,95V/cell.
- **Δ** – „Delta-Peak” setting, if the set value is other than the suggested one, an exclamation mark is displayed (! Δ). With NiCd the value may be set from 4 to 25mV and 1-15mV with NiMH.



## Setting the formatting current

We can set the limiter value after a press of the Rotary knob we set the desired format current in the memory window (same current for charging and discharging) and then confirming (press). It is recommended to use the limiter, especially with new packages which have not yet been formatted. The limiter setting should be a bit higher than the cell's capacity (by about 5-10%). Unnecessary overloading as a result of unequally charge cells, which makes proper recognition of the *Inflex* point or *Delta Peak*, may be prevented in this way.

After all settings meet our requirements, we can plug in the battery packages to the charger. Before beginning the process, it is necessary to check if the number of cells in the package matches that indicated by the charger. After adjusting the number of cells, if necessary, we can start the process by pressing the Rotary knob.

## Balancer – operating

A balancer (Equalizer) integrated with the charger Works with a high power (2 A balancing current). The balancer equalizes the cells' voltage in packages to the lowest one (e.g. for a 16s package – 15 cells can be equalized simultaneously). Each balancing channel has an individually regulated equalizing current – it depends on the level of unbalancing. For each battery type a different initial balance current is fitted, which is corrected in the case of a strong unbalancing (balancing may begin earlier). The higher the cell's voltage is, the more intensive the balancing. It is important to mention, that balancing below a certain voltage limit is not only not recommended but even harmful. **That is why it is recommended to balance during charging.** The only exception is when the package is prepared for longer storage (*Store*). For measuring the voltage by using the balancer port, it is also possible to connect a single cell. This is important for the "**Test**" function (Ri measurement).

If the battery is debalanced so heavily that it cannot be balanced during the charging process, the **Pulsar 3+** will reduce the charging current and enter kinda after-balancing mode. The after-balancing will be indicated by flashing „V“ (Volt) and "B".

## Process set-up – Only balancing (Monitor)

We plug in the package to the charger through the balancer connection (do not plug current cables to the black and red sockets). The "**Monitor**" information will then be displayed. Pressing the dial will start the cells' balancing process according to the current settings in the given program (**Ib:x,xx** balancing current, if **Ib:0,0A** – the charger acts as a voltage monitor). Packages will be balanced in this operating mode in the whole voltage scope.

## Prozess set-up – Test

If testing the internal resistance of the battery pack (as described in the above processes), first set the battery type and discharge current. The most reliable values are calculated when the voltage of the battery pack is at nominal voltage (eg LiPo 3.7-3.8 V / cell), and discharge in the range of 1 - 2C. In the main display, the internal resistance, as measured by the charging cable is shown. In the test, display the total resistance (sum of individual cells) and average value averaged over all cells (measured by balancing cables) are alternately displayed top left. The difference between the mean value and the value from the main process display shows the quality of the charging cable and the electrical connections used. A test takes 30 seconds and provides fairly reliable values, but which may vary according to different measuring methods. The risk measurements during charging also bring different (but valid) values because the measurement method is different. There will always be the real (true) displayed measurement values without conform to a specific measurement method (cheating) to conduct further comparisons with real measurements, which were not carried out with the **Pulsar 3+**. The measurement during charging begins about 1 minute after the start of the process and lasts until the first power reduction. Info: The measurements during charging are possible only when pulse mode is switched on (Pulse ON). The test can be restarted without disconnecting and reconnecting the battery pack.

## Program windows of finished processes

Process windows provide on-the-spot information concerning the processes' progress. Three process windows have been described below to make the displayed information's interpretation easier. In the case of batteries not plugged to the balancer the basic window (illus. below) or *Memorys* window, with history of the 5 last processes, is displayed. The windows can be switched between with a turn of the dial or pressing it for a short time.



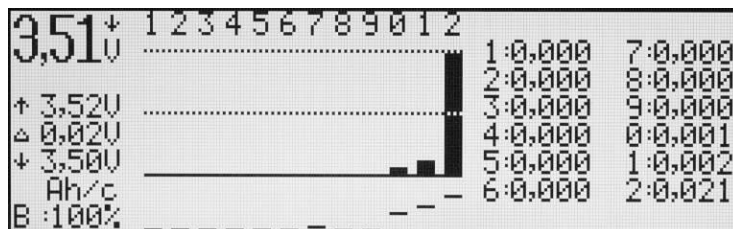
The window showed above (basic process window) contains the following information:

1. **Charge** – charging
2. **+25A** – current charge current
3. **41,6V** – current voltage of the whole package
4. **↑** – voltage change tendency marker
5. **Battery symbol** – a graphic animation of the charging process
6. **F** – indicates that the charger is operating in *Fast* mode
7. **12 LiFe** – battery type – 12 LiFe cell package
8. **Ib: 1,00 A** – balancing power (1A per cell), balancer plugged in
9. **Δ 0,02V** – difference in voltage between the strongest and the weakest cell in the package (0,02V), balancer plugged in
10. **V/c** – the average voltage in the package estimated for one cell, balancer unplugged
11. **B: 30%** – current balancer power (30% of the set 1A), balancer plugged in
12. **Tc: 30,6C** – current temperature (30,6°C)
13. **Vs: 47,9V** – input voltage, power source (47,9V)
14. **Cs: 5Ah** – power consumed by the charger from the power source (5Ah) on a particular day
15. **Ri: 0,087** – current internal resistance of the package (0,087Ω). The *Ri* value is estimated only during the impulse charging (**Pulse on** in *Setup*).
16. **Upper dotted line** – final charge voltage
17. **Voltage chart in the process** – increases during charging, decreases during discharging
18. **Lower dotted line** – final discharge voltage
19. **Time scale** – with intervals each 10 and 5 minutes
20. **C: 3,811Ah** – current charged capacity (3,811Ah)
21. **00:10:41** – process duration



Cells' voltage (**V/c**) window contains the following information:

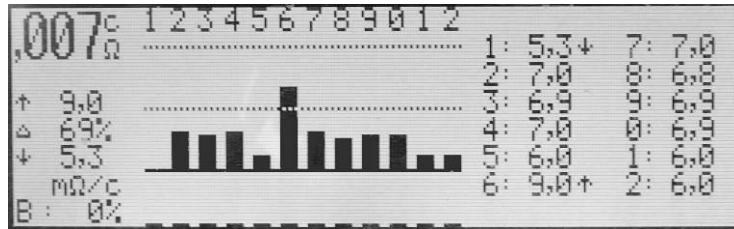
1. **3,52V** – average voltage of all cells in the package (V/cell)
2. **↑** – voltage change tendency marker displayed above "V" (Volt)
3. **Row of numbers** – singular package cells' numbering starting from the first, plugged into the package's "minus" cable
4. **↑ 3,53V** – voltage of the strongest cell in the package (here cell nr. 9)
5. **Δ 0,01V** – difference in voltage between the strongest and the weakest cell (10mV in this example).
6. **↓ 3,52V** – voltage of the weakest cell in the package (here cell nr. 2)
7. **V/c** – cell's voltage window – one of the two windows of the balancer
8. **B: 90%** – current balancer power (90% max. power of the balancer)
9. **Upper dotted line** – +0,05V voltage in proportion to average package value
10. **Middle dotted line** – average package voltage
11. **Lower dotted line** – -0,05V voltage in proportion to average package value
12. **Singular bottom lines** – balancer power level (singular channel). The higher the line, the higher the balancing power of that cell is.
13. **Singular voltages** (on the right) – the cells with the highest and the lowest voltage are marked with the appropriate arrow (here cells 9 and 2)



Equalized package capacity window (**Ah/c**) contains the following information:

1. **3,51V** – (above „V”) – average voltage of all cells in the package (V/cell)
2. **↑** – voltage change tendency marker displayed above "V" (Volt)
3. **Row of numbers** – singular package cells' numbering starting from the first, plugged into the package's "minus" cable
4. **↑ 3,52V** – voltage of the strongest cell in the package
5. **Δ 0,02V** – voltage difference between the strongest and the weakest cell in the package (here 0.02V)

6. ↓ **3,50V** – voltage of the strongest cell in the package
7. **Ah/c** – ampere-hour window per cell – one of the two balancer windows
8. **B: 100%** – current balancer power (100% max. balancer power)
9. **Upper dotted line** – 100% equalized capacity
10. **Middle dotted line** – 50% equalized capacity
11. **Bars** – equalized capacities in bar graphics. The highest bar shows the cell (here cell 12), which required the greatest balancing (100%)
12. **Singular bottom lines** – balancer power level (singular channel). The higher the line, the higher the balancing power of that cell is.
13. **Equalize capacity** – in ampere-hour per one cell (here in cell 12 = 0,021Ah)



The display (inner resistance of cells **mΩ/c**) shows following information:

1. **,007 Ω/c** = Sum of resistances of single cells alternating with middle inner resistance of all cells (Ω/cell)
2. ↑ **9,0 mΩ** = Resistance of the cell with the highest value within the battery pack (cell 6 in this case)
3. Δ **58%** = Current difference between resistance of the weakest and strongest cell is 17 % (if 0 % is showed, the cell values are equal; if 100 % is showed, the cell has double value of the best cell).
4. ↓ **5,3 mΩ** = Resistance of the cell with the highest value (cell 1 in this case)
5. **Row of numbers** – singular package cells' numbering starting from the first, plugged into the package's "minus" cable
6. **mΩ/c** = Display **mΩ** per cell
7. **B: 0%** = current balancer power (100 % max. balancer power). Info: The values of inner resistance might be influenced by balancing. For this reason, the balancing power is displayed as well!
8. **Upper line** = 100 %
9. **Middle line** = 50 %
10. **Bars** – equalized capacities in bar graphics. The highest bar shows the cell (here cell 12), which required the greatest balancing (100%)
11. **Singular bottom lines** – balancer power level (singular channel). The higher the line, the higher the balancing power of that cell is.
12. **Single cell inner resistance** = The cell with the highest and lowest resistance is marked by an arrow (cells 1 and 6 in this case)

**Warning! Pulsar 3+** conducts estimates correct to three decimal places and so they are displayed on the computer screen. Due to the size of LCD displays, the values are rounded up to two decimal places. Because of this some differences may occur.

## Process initialization

After plugging the battery, **Pulsar 3** checks and displays the number of recognized cells.

**Warning:** Thanks to this the charger will always recognize the right amount of cells in the package! It is important to check if the number of cells in the package has been properly recognized before starting the process. After adjusting the number of cells, if necessary, we can start the process by pressing the Rotary knob.

**Info:** If the Pulsar is connected to an LiXX battery pack without balancer, the double confirmation of cell count is necessary.

## Process end, reports and alarms

**Warning!** Interrupting the process in progress is allowed only through holding the dial and not by unplugging the package!



Window after ending the process, the displayer shows a „STOP“ message and the backlit blinks recurrently (after manual process interruption). An acoustic signal is also generated, which fades after 30 seconds and is turned off after 5 minutes. To

start another process (return to memory window) the package must be unplugged from the charger!

The window May display the following information:

<\*> **data process** – through turning or pressing the Rotary knob, last process windows will be displayed directly before the process' end

Messages (in the frame):

**END** – proper process end.

**STOP** – premature process end – as show on the picture above (by holding the dial).

**LIMITER** – process end after reaching the capacity limit set in the limiter.

**TIMER** – process end after exceeding the process' time limit (24 hours per process).

**PAUSE** – displayed automatically between processes in progress. Below it the time left before starting the next process is shown. If the battery temperature "**T on**" is higher than the one set in the setup a "**Tc to high: xx,x C**" message will be displayed until the battery cools down.

**! Δ x,xx V !** – displayed when the process, with a plugged in balancing (for LiXX cells), ends after the voltage difference between singular cells exceeds 50mV.

### Alarms – stopping the process

**Vc high** – when the voltage of one of the cells (or package) exceeds the allowable value

**Vc low** = Too low cell voltage (can possibly happen while test)

**Tc high** – when the package temperature exceeds the set limit

**Ti high** – when the charger is overheated. All vents should be checked for signs of obscuring. The charger should not be used in a closed car trunk, where the temperature may rapidly exceed the allowable value for the charger's use.

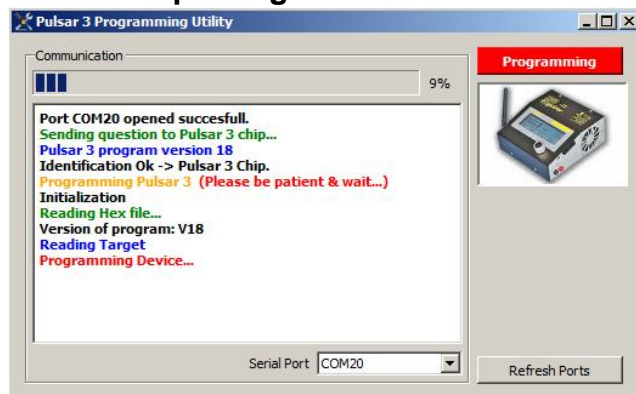
**Vs low** – when the supply voltage is too low (e.g. the car battery is discharged too deeply)

**Vs high** – when the supply voltage is too high

**ERROR** – error (when for example the battery is plugged into the balancer socket and the chosen battery type was NiXX, a **Wrong connect!** and **! Disconnect accu !** message will be additionally displayed.

**Additional information:** Due to the enormous power which come from the induction during the impulse operation, clicking sounds may occur every second in the transformer inductor. This is normal and no reason to worry about.

## Software updating



The **Pulsar 3+** is prepared for an easy firmware upgrade. To execute that, unpack the firmware (ZIP) and start the EXE file (**Pulsar 3 Utility**). The **Pulsar 3+** must be connected to the computer by USB port for upgrade.

**Pulsar 3** must be connected to the computer through a USB cable. To prevent software conflicts all PC programs should be turned off for the duration of the updating process. Interrupting the update may lead to the charger's damage.

The charger should be connected with a power supply and left in standard mode (see – main menu – do not press the Rotary knob!) After starting the

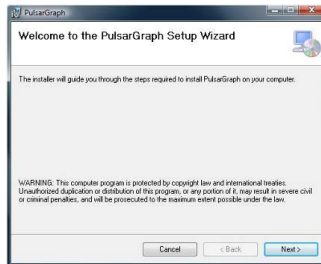
program we chose the appropriate „Serial Port“ (COM 7 in the example above) by which **Pulsar 3+** will communicate with the computer and then Press the red „Programming“ button to start the software exchange process. The process progress is visible in the „Communication“ window. The „Refresh Ports“ button refreshes the list of available ports. The „Done“ message confirms that the software update has been finished successfully.

If the update is finished unsuccessfully, the whole procedure should be repeated (connect the charger to the power supply again), even if the charger's display remains clear.

### PC software (PulsarGraph v 4.72)

The SD memory card added to the **Pulsar 3** charger contains the installation version of Pulsar Graph. On the left side of the charger there is a USB socket, through which a direct data flow to the computer is possible during the process (communication is also possible wireless through BT). The computer software allows following the process' progress, saving data and comparing many processes registered earlier. Files saved in the charger on the SD memory card can be analyzed through the software. The program operates with Windows systems (XP, Vista, Windows 7 with 32 and 64 Bit).

## Installation

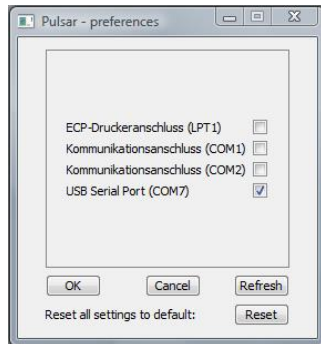


To install the software the „PULSAR\_3\_UTILITY” folder must be copied from the memory card to the hard disc. Next the Setup.exe file, located in the „PULSAR\_GRAPH” folder, must be started. The installation progress is very simple and does not require further description

### USB drivers.

In case the **Pulsar 3** USB cable has not been recognized by the PC, the „Drivers” folder should be chosen during the driver installation, where the current USB driver is located.

## Hardware installation



It is necessary to give the port name, with which **Pulsar 3+** will be communicating with the computer. Through „File > Preferences” we open the window containing recognized hardware.

**Pulsar 3+** should be recognized as hardware – a “USB Serial Port” assigned to a communication COM port of the appropriate number (the same for wireless BT communication). In the window we mark our device and acknowledge by pressing OK.

The „Refresh” button refreshes the list of available devices and the „Reset” button sets the default location and size of the windows.

**Warning!** The wireless BT or BT/WiFi transmission is blocked if the USB cable is connected to the charger.

## Menu window

After starting the data transmission, or when the data will be saved to a file, the menu graphic window opens. We can enlarge the charts (by selecting the area with the left mouse button) and moving it (while holding the button). By double clicking the chart returns to the size of the window.

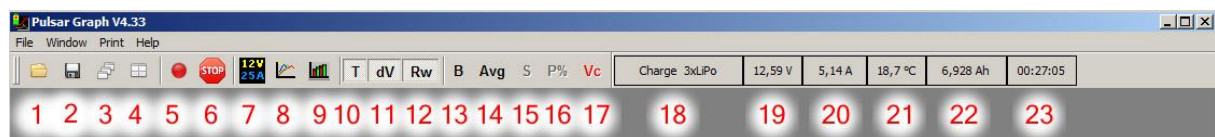


Chart description (from top): green line – package voltage curve (V); yellow – voltage increase curve (mV/min); blue – current curve (A); purple – Ri (internal package resistance); red – temperature curve (°C).

Below: charts, which appear after pressing „B” (*Balance*) from the symbol toolbar. In the upper part of the window there are voltage charts for separate cells (only with Am active balancer). It is possible to select and show the charts of the selected cells (see *Voltage comparison* window – “S” button).



### Symbol toolbar – function description



Toolbar's symbols function:

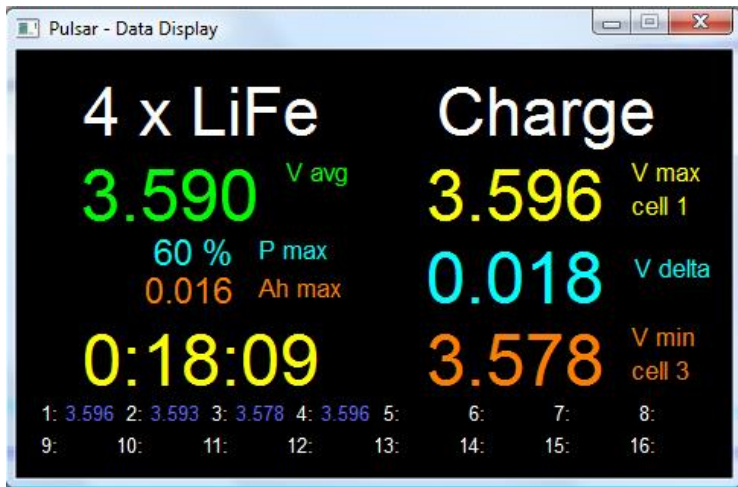
1. Open file.
2. Save file.
3. Stack windows.
4. Set windows side by side.
5. **Record** button – saving files begins automatically when the data transmission begins. Saving can be paused and resumed with this button. When the “Rec” sign is blinking the transmission is active but the data saving is paused.
6. Stop button - process is stopped.
7. Data window (description below).
8. „*Voltage comparison*” window (description below)
9. „*Capacity comparison*” window (description below)
10. T – enable/disable temperature chart
11. dV – enable/disable voltage increase chart (mV/min) / switched to mAh diagramm
12. Rw – enable/disable internal resistance chart, active when in the charging process the “*Pause*” mode is active in the setup
13. B – {*Balance*} switches between the standard window and the balancer window.
14. AVG – voltage value charts per cell: green – medium; yellow – maximum; red – minimal (only when “B” is disabled)
15. S – {*Select*} switches between: S, - or +. After selecting (bolding) the curves we can disable the remaining “+” curves or the marked “-” curves (only when “B” is enabled)
16. P% – „*Bar-Display*” shows the voltage of singular cells compared to the average value in the form of a graph or, if the „Ah” button is active, the equalized capacity of singular cells. Current balancing currents are displayed below (only when “B” is enabled)
17. Ah – switches the „*Data*” window from current voltages to current equalized capacities (a list of cells at the bottom of the window, only when “B” is enabled)
18. Type of process and the number of cells in the package
19. Current package voltage
20. Current process current
21. Current package temperature



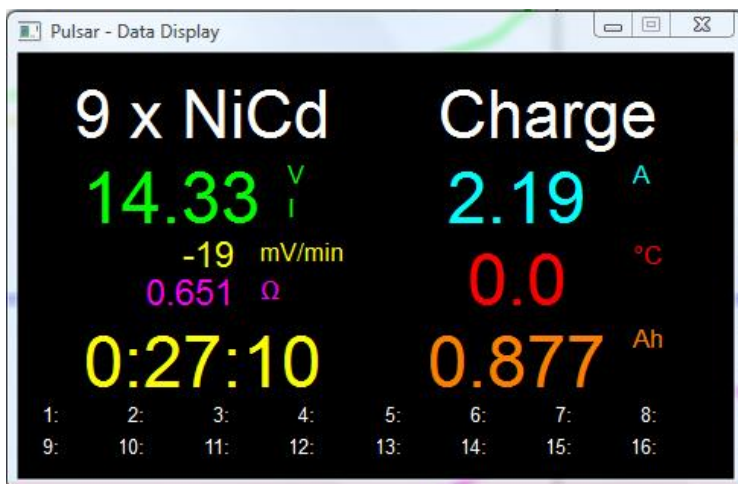
22. Charged or discharged capacity
23. Duration of the process

### Data window (data)

After clicking „Data“ a window pens containing the most crucial data from the process' progress.



„Data“ window, when the balancer is active. A 4s-LiFe package is charged, the average voltage (avg) is 3.590V, the balancer operates on 60% power, the strongest cell was balanced 0.016Ah, the process duration is 18 minutes and 9 seconds, the strongest cell has 3,596V (cell 1), delta (the difference between the strongest and the weakest cell) of 0,018V, the weakest cell has 3,578V (cell 3). Voltage of all the cells in the package is shown below.



„Data“ window, when the balancer is not active.

Package 9 x NiCd is charged, 14,33V, the displayed „I“ show that the inflex was already recognized, current voltage decrease in the package is -19mV/min (the process is in the delta-peak recognition phase), package resistance (Ri) is 0,651Ω, process duration is 0 hours 27 minutes and 10 seconds, the current current is 2,19A, 0,0°C – indicates that the temperature indicator has not been plugged in, charged 0,877 Ah.

### „Voltage comparison “ window

In this window voltage curves from many processes (for example formatting or regeneration) can be compared. After clicking (x1) in the upper left corner the estimated voltage per cell will be show.

The "S" button will switch between: S, - or +. In the „S“ position we mark the curves by clicking their number in the window's key (on the right side) while holding CTRL we can mark several curves. Another clicking of the „S“ button will disable the remaining „+“ curves or disable marked „-“ curves.

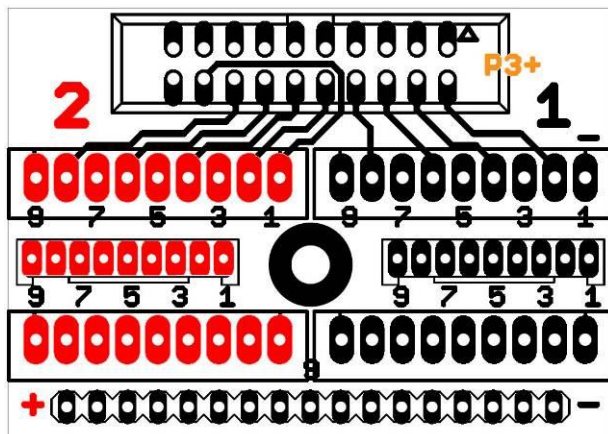
### „Capacity comparison “ window

The bar chart enables a quick capacity data comparison for singular processes (e.g. formatting). The red bar shows discharge, the bright-red shows discharge after current reduction, green shows charging, bright-green – for NiXX – shows the Inflex point after detection, and for the rest of the batteries – after charging current reduction of after changing to impulse mode with Fast mode enabled.

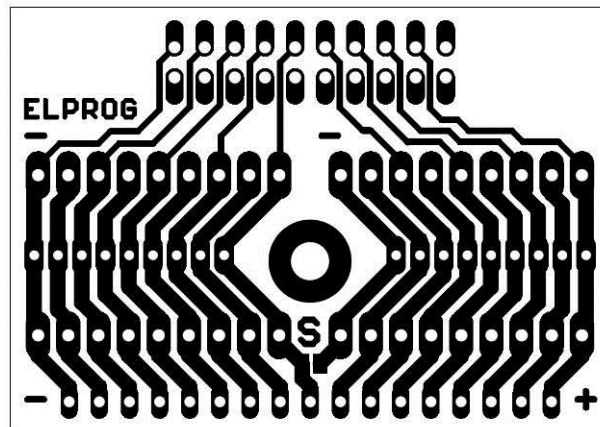
When more then 8 windows will be opened at the same time – left and right arrows can be used to move the chart (scroll).

## Appendix 1

### Battery interface P3+



Above: Connector side view



Above: Soldering view

The battery interface is a PCB which allows the easy connection of battery packs to the balancer output of the **Pulsar 3+**. The PCB should be screwed to the Pulsar housing (middle bore). The 16 channels have 17 circuit paths (1 x minus and 16 x plus of the cells of the battery pack). The PCB contains two connector strips with 9 pins each. Above there are XH connector strips which are prepared for balancing plugs to be connect right-aligned (to the minus pin). This way it is possible to connect 1 or 2 plugs which are smaller than 9 pins each. It is important that the minus plug (when the battery has two balancing plugs or when e. g. 2 x 6S batteries should be charged and balanced) is connected to the connection strip marked as no. „1“ and the balancing plug with the plus from the total battery pack to the connection strip marked as no. „2“. Please take care to connect the balancing plug right-aligned (starting from pin 1 each right side). Wrong connecting of the plug will not cause a short circuit, but the **Pulsar 3+** will not detect the second part of the battery.

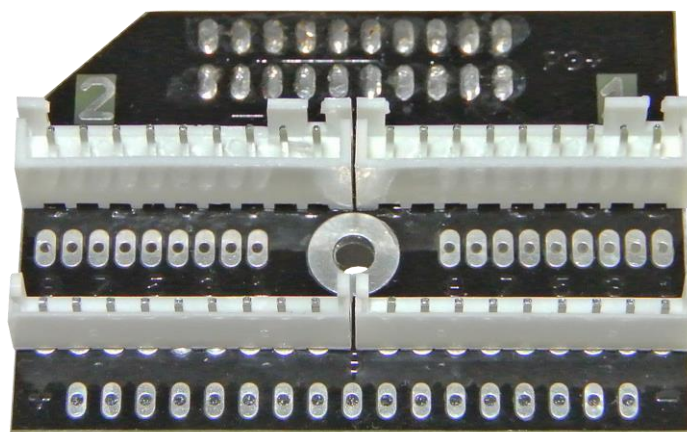
In the second bore strip (right/left from the attachment bore) it is possible to solder connector strips with a pin distance of 2,0 mm.

In the third bore strip, same as the first one, there are EH connectors. These should be used the same way as the XH connectors.

The fourth bore strip is also not connected. Here it is possible to solder a open pin strip with 2,54 mm distance. Here the pins have no second minus connection and have to be connected with the minus from cell no. 1 and with the plus of the cells no. 1, 2, 3, 4,...16. To use the bore strip with more than 8 cells, the „S“ marked spot [PCB view from the circuit paths bypassed (soldered)]. In this case, the bore strips 1 to 3 should not be used for batteries bigger than 8S (or when these are equipped with two balancing plugs).

### PCB pin configuration

- Pin 1 – minus cell 1
- Pin 2 – plus cell 1 / minus cell 2
- Pin 3 – plus cell 2 / minus cell 3
- .....
- .....
- Pin 16 – plus cell 15 / minus cell 16
- Pin 17 – plus cell 16



Above: standard configuration of the balancer PCB

### CAUTION

- Please pay close attention to the proper polarity of the plugging
- Avoid any short circuits
- Contact customer service in case of any signs of device malfunction

## INDEX

### A

**Ah/c** 4, 16  
alarms 2, 17  
**Auto** 4, 12, 14

### B

**Backup** 8  
**Balancer adapter** 22  
balancer socket 6  
Basic setup 9  
**Batteries** 7  
**Beep** 4, 9  
**BT/WiFi** 1, 2, 4, 6, 7, 8, 19

### C

**Certificate of conformity** 4  
**Ch.Dis** 4  
**Charge** 4  
charging LiXX 10  
charging NiXX 9  
charging Pb 11  
clock 5, 7, 8  
**Condit** 13  
**Contr.** 4, 9  
**Cs** 4

### D

**Dis.Ch.** 4  
**Disch.** 4  
discharging 11  
Double processes 12  
DSP 1

### E

**Export** 8

### F

**Fast** 4, 5, 10, 11, 15, 22

**Format** 2, 4, 9, 14

### I

**Ib:x,xx** 10  
**Import** 8  
*Inflex* 4, 9, 10, 14, 22  
Installation 19  
**Invers** 4, 9

### L

**Last proc.** 4  
**Light** 4, 9  
**LiXX** 4

### M

*Memory* 2, 4, 5, 7, 10  
**memory card** 1, 2, 4, 5, 6, 7, 8, 19

### N

**NiXX** 4

### O

Only balancing 15  
**Operating principle** 7

### P

**Parameters** 2, 4, 7, 9, 10, 11, 13, 14  
**Pause** 5, 9, 12, 14, 21  
**Pb** 4  
**PC software** 19  
**Personalizing** 8  
**Power** 1, 3, 5, 7, 9  
Process end 17  
Process initialization 17  
PulsarGraph 19  
*Pulse* 5, 7, 8, 9, 15

### R

**Reflex** 5, 10, 11  
**Regen.** 5, 14  
**Rep\*01** 12, 14  
*Revers* 5, 7, 9, 11, 12, 13  
**Ri** 5, 15, 20, 22  
**RTC** 5

### S

**SD** 1, 2, 4, 5, 6, 7, 8, 19  
settings 8  
**Setup** 7, 8, 9, 15, 19  
**Send last** 8  
**Software updating** 18  
Starting and operating 5  
**Store** 2, 4, 5, 10, 13, 14

### T

**T off** 5, 9  
**T on** 5, 9, 17  
**Table of content** 2  
**Tc** 5, 15, 17  
**Technical specification** 3  
**Ti** 5, 17

### V

**V off** 9  
**V rev** 5, 9  
**V/c** 5, 15, 16  
**Vc** 5, 11, 17  
**Vd** 5, 11, 12, 14  
**Ve** 5, 13  
**Voff** 5  
**Vrev** 5, 12  
**Vs** 5, 7, 11, 13, 15, 17

### Δ

Δ 4, 9, 10, 14, 15, 16, 17

**Manufacturer & Service:**  
ELPROG  
Ul. Przemysłowa 11  
35-105 Rzeszów  
Poland

**Distribution & Service**  
pp-rc Modellbau  
Paul-Junge-Str. 10  
25336 Elmshorn  
Germany

www.pp-rc.de  
WEEE-Reg.-Nr DE77074747